

---

03

**SEAMLESS  
CONCENTRIC  
AND ECCENTRIC  
REDUCERS**

---

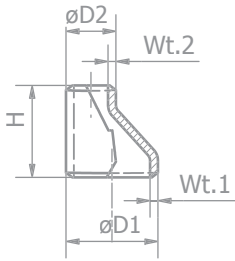
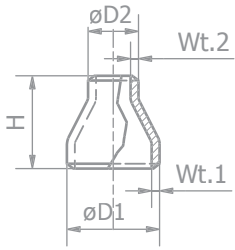
ASME B16.9 or MSS SP-75

---



**CENA**

[www.cenafittings.com](http://www.cenafittings.com)



O.D. INCHES D	WT SCH. WT	O.D. MM D1	O.D. MM D2	WT MM WT 1	WT MM WT 2	HEIGHT MM H	THEORETICAL WEIGHT KG
1" x 3/4"	Std	33,40	26,70	3,38	2,87	51	0,14
	Xs			4,55	3,91		0,17
	160			6,35	4,85		0,20
	XXs			9,09	7,47		0,23
1.1/4" x 3/4"	Std	42,40	26,70	3,56	2,87	51	0,20
	Xs			4,85	3,91		0,23
	160			6,35	4,85		0,32
	XXs			9,70	7,47		0,34
1.1/4" x 1"	Std	42,40	33,40	3,56	3,38	51	0,20
	Xs			4,85	4,55		0,24
	160			6,35	6,35		0,32
	XXs			9,70	9,09		0,34
1.1/2" x 3/4"	Std	48,30	26,70	3,68	2,87	64	0,22
	Xs			5,08	3,91		0,30
	160			7,14	4,85		0,41
	XXs			10,16	7,47		0,45
1.1/2" x 1"	Std	48,30	33,40	3,68	3,38	64	0,24
	Xs			5,08	4,55		0,31
	160			7,14	6,35		0,41
	XXs			10,16	9,09		0,45
1.1/2" x 1.1/4"	Std	48,30	42,40	3,68	3,56	76	0,26
	Xs			5,08	4,85		0,33
	160			7,14	6,35		0,41
	XXs			10,16	9,70		0,45
2" x 1"	Std	60,30	33,40	3,91	3,38	76	0,37
	Xs			5,54	4,55		0,45
	160			8,71	6,35		0,84
	XXs			11,07	9,09		0,91
2" x 1.1/4"	Std	60,30	42,40	3,91	3,56	76	0,39
	Xs			5,54	4,85		0,53
	160			8,71	6,35		0,84
	XXs			11,07	9,70		0,91
2" x 1.1/2"	Std	60,30	48,30	3,91	3,68	89	0,41
	Xs			5,54	5,08		0,54
	160			8,71	7,14		0,84
	XXs			11,07	10,16		0,91
2.1/2" x 1.1/2"	Std	73,10	48,30	5,16	3,68	89	0,68
	Xs			7,01	5,08		0,86
	160			9,53	7,14		1,36
	XXs			14,02	10,16		1,81
2.1/2" x 2"	Std	73,10	60,30	5,16	3,91	89	0,73
	Xs			7,01	5,54		0,94
	160			9,53	8,71		1,36
	XXs			14,02	11,07		1,81
3" x 1.1/2"	Std	88,90	48,30	5,49	3,68	89	0,86
	Xs			7,62	5,08		0,99
	160			11,13	7,14		1,81
	XXs			15,24	10,16		2,27
3" x 2"	Std	88,90	60,30	5,49	3,91	89	0,91
	Xs			7,62	5,54		1,18
	160			11,13	8,71		1,81
	XXs			15,24	11,07		2,27
3" x 2.1/2"	Std	88,90	73,10	5,49	5,16	89	0,98
	Xs			7,62	7,01		1,29
	160			11,13	9,53		1,81
	XXs			15,24	14,02		2,27

O.D. INCHES D	WT SCH. WT	O.D. MM D1	O.D. MM D2	WT MM WT 1	WT MM WT 2	HEIGHT MM H	THEORETICAL WEIGHT KG		
4" x 2"	Std	114,30	60,30	6,02	3,91	102	1,44		
	Xs			8,56	5,54		1,78		
	160			13,49	8,71		2,27		
	XXs			17,12	11,07		3,40		
4" x 2.1/2"	Std	114,30	73,10	6,02	5,16		102	1,52	
	Xs			8,56	7,01			1,90	
	160			13,49	9,53			2,72	
	XXs			17,12	14,20			3,63	
4" x 3"	Std	114,30	88,90	6,02	5,49			102	1,59
	Xs			8,56	7,62				2,13
	160			13,49	11,13				2,72
	XXs			17,12	15,24				3,63
5" x 3"	Std	141,30	88,90	6,55	5,49	127			2,60
	Xs			9,53	7,62				3,55
	160			15,88	11,13				6,35
	XXs			19,05	15,24				7,26
5" x 4"	Std	141,30	114,30	6,55	6,02		127		2,72
	Xs			9,53	8,56				3,78
	120			12,70	11,13				4,98
	160			15,88	13,49				6,35
6" x 3"	Std	168,30	88,90	7,11	5,49			140	3,63
	Xs			10,97	7,62				5,04
	160			18,24	11,13				7,03
	XXs			21,95	15,24				9,07
6" x 4"	Std	168,30	114,30	7,11	6,02	140			3,72
	Xs			10,97	8,56				5,45
	120			14,27	11,13				7,56
	160			18,24	13,49				8,16
6" x 5"	Std	168,30	141,30	7,11	6,55		140		3,93
	Xs			10,97	9,53				5,72
	120			14,27	12,70				7,56
	160			18,24	15,88				8,16
8" x 4"	Std	219,10	114,30	8,18	6,02			152	5,95
	Xs			12,70	8,56				8,44
	120			18,24	11,13				12,10
	160			23,01	13,49				12,70
8" x 5"	Std	219,10	141,30	8,18	6,55	152			6,08
	Xs			12,70	9,53				8,88
	120			18,24	12,70				12,10
	160			23,01	15,88				12,70
8" x 6"	Std	219,10	168,30	8,18	7,11		152		6,31
	Xs			12,70	10,97				9,26
	120			18,27	11,13				13,20
	160			23,01	18,24				14,29
10" x 6"	Std	273,00	168,30	9,27	7,11			178	10,10
	Xs			12,70	10,97				13,50
	120			21,41	14,27				24,30
	160			28,58	18,24				26,31
10" x 8"	Std	273,00	219,10	9,27	8,18	178			10,50
	Xs			12,70	12,70				14,20
	120			21,41	18,24				24,30
	160			28,58	23,01				26,31

O.D. INCHES D	WT SCH. WT	O.D. MM D1	O.D. MM D2	WT MM WT 1	WT MM WT 2	HEIGHT MM H	THEORETICAL WEIGHT KG	
12" x 8"	Std	323,90	219,10	9,53	8,18	203	14,60	
	Xs			12,70	12,70		17,00	
	120/XXs			25,40	18,24		38,56	
	160			33,32	23,01		38,56	
12" x 10"	Std	323,90	273,00	9,53	9,27	203	15,20	
	Xs			12,70	12,70		19,80	
	120/XXs			25,40	21,41		43,09	
	160			33,32	28,58		43,09	
14" x 10"	Std	355,60	273,00	9,53	9,27	330	27,40	
	40			11,13	9,27		31,12	
14" x 12"	Xs	355,60	323,90	12,70	12,70		330	36,10
	Std			9,53	9,53			28,80
16" x 10"	40	406,40	273,00	11,13	10,31	356	31,12	
	Xs			12,70	12,70		37,70	
	Std			9,53	9,27		33,10	
16" x 12"	40	406,40	323,90	12,70	12,70		356	43,77
	Xs			9,53	9,53			34,30
	Std			12,70	10,31			45,00
18" x 12"	40	457,00	323,90	9,53	9,53	381	35,20	
	Xs			12,70	11,13		43,77	
	Std			12,70	12,70		46,30	
18" x 14"	40	457,00	355,60	9,53	9,53		381	40,50
	Xs			12,70	12,70			53,60
	Std			14,27	11,13			59,42
20" x 12"	40	508,00	323,90	9,53	9,53	508	41,30	
	Xs			12,70	12,70		54,50	
	Std			14,27	11,13		59,42	
20" x 14"	40	508,00	406,40	9,53	9,53		508	42,70
	Xs			12,70	12,70			55,80
	Std			14,27	12,70			59,42
20" x 16"	40	508,00	457,00	9,53	9,53	508	60,80	
	Xs			12,70	12,70		79,90	
	Std			15,06	10,31		92,99	
24" x 14"	40	609,60	355,60	9,53	9,53		508	61,30
	Xs			12,70	12,70			81,30
	Std			15,06	11,13			92,99
24" x 16"	40	609,60	406,40	9,53	9,53	508		62,60
	Xs			12,70	12,70			82,60
	Std			15,06	12,70			92,99
24" x 18"	40	609,60	457,00	9,53	9,53	508	64,50	
	Xs			12,70	12,70		84,40	
	Std			15,06	14,27		92,99	
24" x 20"	40	609,60	508,00	9,53	9,53		508	72,60
	Xs			12,70	12,70			95,80
	Std			17,48	11,13			129,27

Some thicknesses will be tapered from higher schedules.